



MEACOCK & JONES

4 Bedrooms

House - Semi-Detached

Located in Great Warley

**Guide Price
£900,000- £950,000**



enquiries@meacockjones.co.uk

www.meacockjones.co.uk

01277 218485

The Old Pump Works Great Warley

Brentwood | | CM13 3JR



Initial offers invited in the region of £900,000 - £950,000 Set within the private gated development of The Old Pump Works, this exceptional circa 1800 residence occupies an enviable corner plot in an idyllic setting. Rich in character, this unique four-bedroom home features vaulted ceilings, picture windows, and exposed brickwork, blending industrial heritage with contemporary design. Benefits include ultra-fast broadband, underfloor heating throughout and air conditioning in the living area and principal bedroom. No onward chain.

At the heart of the home is an exceptional open-plan kitchen and living space, flooded with natural light and blending characterful industrial features with sleek modern finishes. The designer kitchen offers an extensive range of units and drawers, complemented by quartz worktops, a central island with overhang, and high-end integrated appliances, alongside a dedicated dining area. A spacious utility room provides further storage and appliance space. Double doors open into an additional reception room, currently used as a gym, but equally suitable as a dining room, home office, or cinema room. A well-appointed cloakroom completes the ground floor.

A striking contemporary metal staircase with glass balustrade and wooden treads leads to the first floor, where vaulted ceilings enhance the sense of space and light. There are four generous double bedrooms, including a principal suite with a luxurious en-suite bathroom and dressing room. Bedroom two also benefits from a stylish en-suite, alongside a beautifully appointed family bathroom with freestanding bath and separate shower.

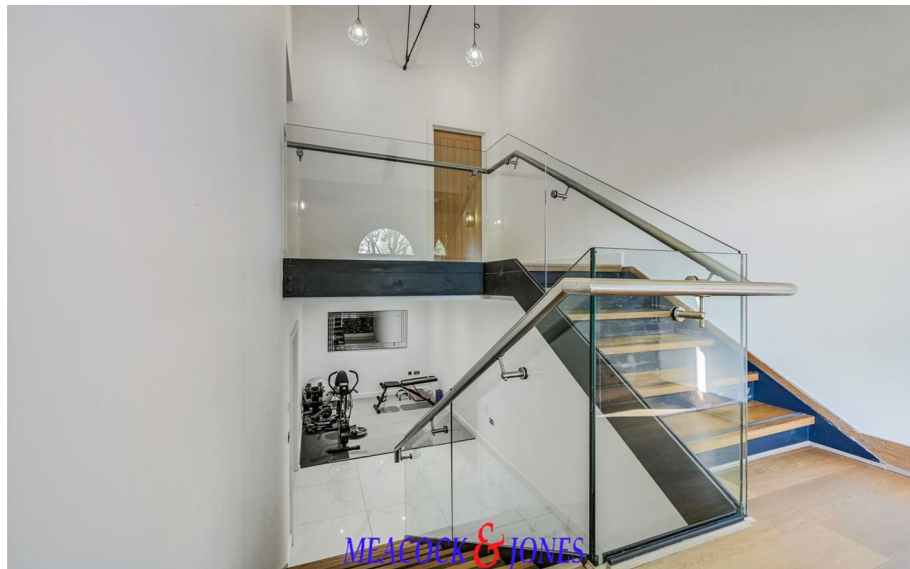
The rear garden commences with a patio perfect for entertaining and a well-kept



The Old Pump Works, Great Warley Street

Guide Price £900,000 - £950,000

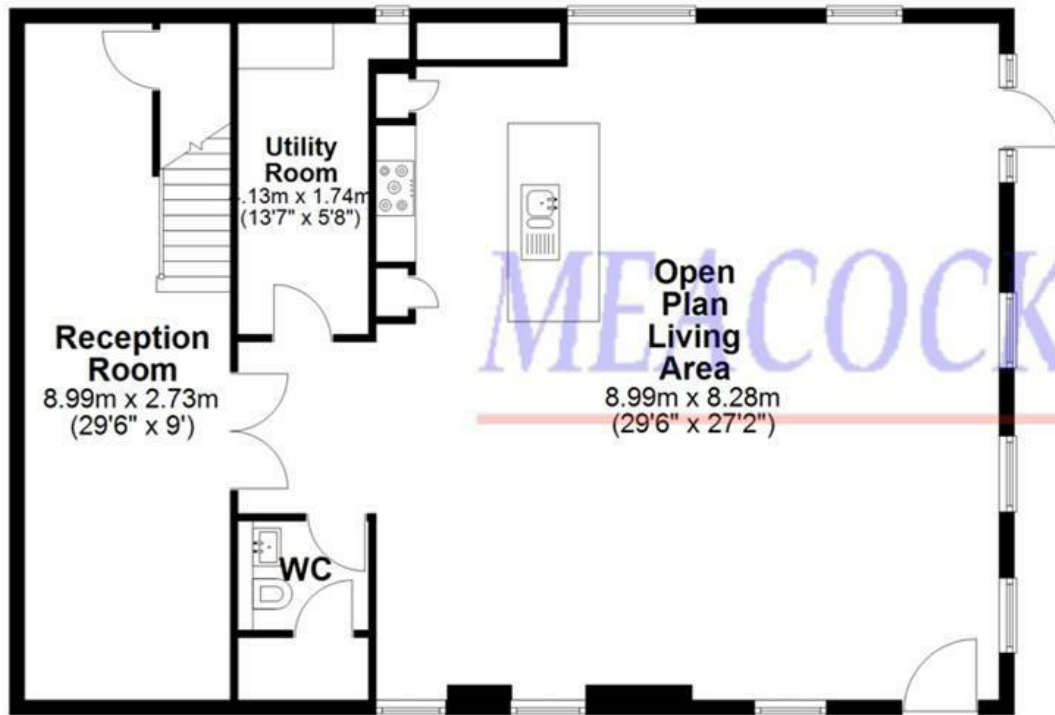
- Four Double Bedrooms
- Outstanding Open Plan Living/Kitchen Area
- Separate Reception Room
- Ultra Fast Broadband Speed
- Close to Brentwood and West Horndon Stations
- Sought After Gated Development
- Spacious Utility Room
- Two En-suites and Large Family Bathroom
- Underfloor Heating and Air Conditioning
- NO ONWARD CHAIN



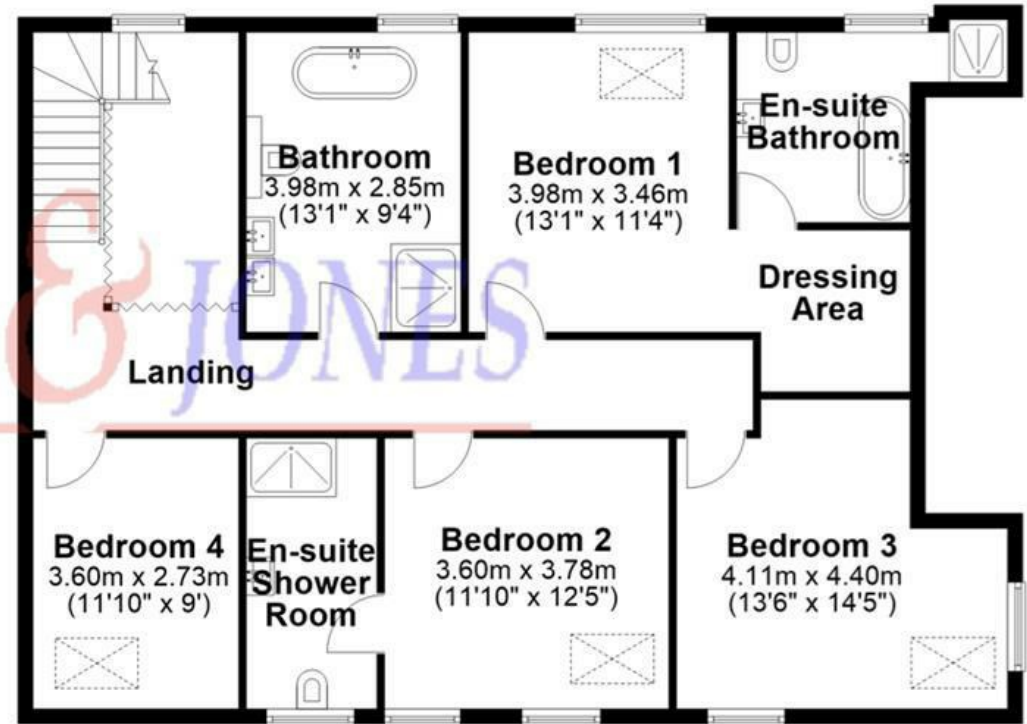




Ground Floor



First Floor



Approximate Internal Floor Area

Total 225 SQ M 2424 SQ FT

This floor plan is for guidance to layout only and is
NOT TO SCALE.

Whilst every care is taken in the preparation of this plan, please
check all dimensions, shapes & compass bearings before
making any decisions reliant upon them.

Copyright Meacock & Jones

Accommodation Comprises of:-

Open Plan Living/Kitchen Area
28'6 x 27'2

Utility Room
13'7 x 5'8

Ground Floor Cloakroom

Reception Room/Gym

First Floor Landing

Bedroom One
13'1 x 11'4

En-suite Bathroom

Dressing Room

Bedroom Two
11'10 x 12'5

En-suite Shower Room

Bedroom Three
13'6 x 14'5

Bedroom Four
11'10 x 9'

Family Bathroom
13'1 x 9'4

Rear Garden

Front Garden - Parking for Two Vehicles

Agents Note. 6 Years Remaining on the Warranty

MEACOCK & JONES

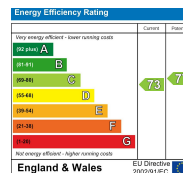
106 Hutton Road
Shenfield
Essex
CM15 8NB

01277 218485

enquiries@meacockjones.co.uk

Council Tax Band: G

Local Authority: Brentwood Council



Whilst care has been exercised in the preparation of these particulars, statements about the property must not be relied upon as representations or statements of fact. Prospective purchasers must make and rely upon their own enquiries and those of their professional representatives. All measurements, areas and distances given are approximate. We have not tested any apparatus, equipment, fixtures, fittings or services and so cannot verify they are in working order. Any fixtures or fittings detailed in these particulars are not necessarily included in the sale price and Meacock & Jones and their staff accept no liability for any errors contained therein.



www.meacockjones.co.uk